

Balancers



Spring balancers

Zero gravity balancers

Electric zero gravity balancers



Balancers

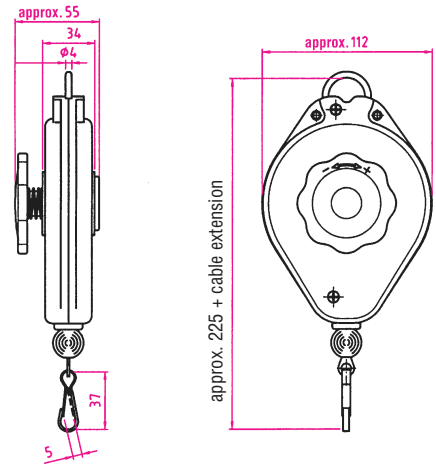
Products · Service · Know-how





Spring Balancer type 5200

- Easy load adjustment with hand wheel
- Impact-resistant plastic housing
- Small, light-weight, compact
- Suitable for assembly and manual workplaces
- Rugged steel-eye suspension
- Special suspension spring, riveted
- Polyamide cable, diameter = 2 mm

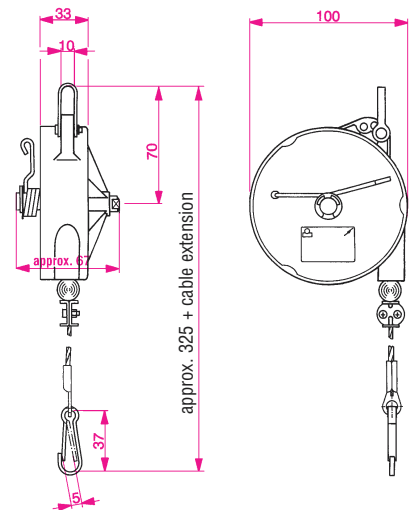


ID no.	Load range	Cable travel	Dead weight
5200 0000 01	0,5 - 1,2 kg	2,0 m	0,6 kg
5200 0000 02	1,0 - 2,0 kg	2,0 m	0,6 kg



Spring Balancer type 7200

- Impact- and abrasion-resistant plastic, orange
- Varnished steel housing top
- Cable drum made of abrasion-resistant plastic
- Dimensionally stable unit, fully assembled
- Insulated suspension
- Special suspension spring, riveted
- Stepless/continuous load adjustment
- Steel cable with light-duty spring hook for load suspension
- Certified with German "GS" mark ("safety-tested")

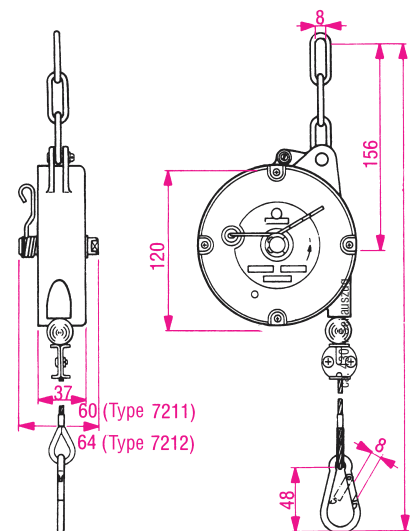


ID no.	Load range	Cable travel	Dead weight
7200 0000 00	0,0 - 0,5 kg	1,2 m	0,5 kg
7200 0000 01	0,3 - 1,2 kg	1,2 m	0,5 kg
7200 0000 02	1,0 - 2,0 kg	1,2 m	0,6 kg



Spring Balancers type 7211 (without ratchet lock) and 7212 (with ratchet lock)

- Impact- and abrasion-resistant plastic, orange
- Varnished steel housing top
- Cable drum made of abrasion-resistant plastic
- Dimensionally stable unit, fully assembled
- Insulated suspension
- Special suspension spring, riveted
- Stepless load adjustment
- Steel cable with screw-type spring hook for load suspension
- Cable drum lockable
- Certified with German "GS" mark ("safety-tested")



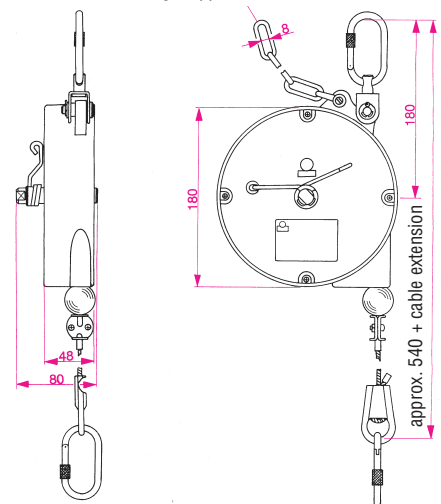
without ratchet lock	with ratchet lock	Load range	Cable travel	Dead weight
7211 0000 01	7212 0000 01	0,6 - 1,0 kg	2,0 m	0,70 kg
7211 0000 02	7212 0000 02	1,0 - 2,0 kg	2,0 m	0,75 kg
7211 0000 03	7212 0000 03	2,0 - 3,0 kg	2,0 m	0,80 kg



Spring Balancers type 7221 (without ratchet lock) and 7222 (with ratchet lock)

- Impact- and abrasion-resistant plastic, orange
- Varnished steel housing top
- Cable drum made of rugged steel
- Suspension with rotary screw-type spring hook
- Standard safety chain and spring fracture safeguard
- Special suspension spring, banded ("belted")
- Stepless load adjustment
- Steel cable with screw-type spring hook for load suspension
- Cable wedge for continuous cable length adjustment
- Cable drum lockable
- Certified with German "GS" mark ("safety-tested")

7-link chain, total length approx. 225

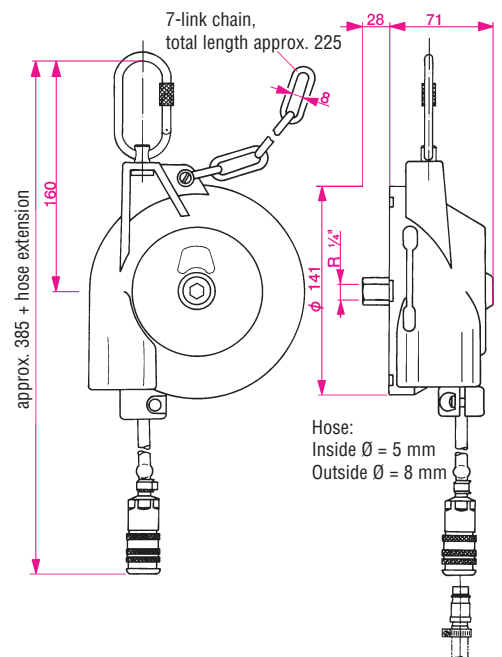


without ratchet lock	with ratchet lock	Load range	Cable travel	Dead weight	with ratchet lock
7221 0000 41	7222 0000 33	2,0 - 5,0 kg	3,0 m	3,1 kg	3,3 kg
7221 0000 42	7222 0000 34	4,0 - 6,0 kg	3,0 m	3,2 kg	3,4 kg
7221 0000 45	7222 0000 38	6,0 - 8,0 kg	3,0 m	3,3 kg	3,5 kg
7221 0000 04	7222 0000 04	8,0 - 10,0 kg	2,0 m	3,4 kg	3,6 kg



Air Hose Balancer Type 7223

- Impact- and abrasion-resistant plastic, orange
- Varnished steel housing cover
- Cable drum made of hard-wearing plastic
- Suspension with rotary screw-type spring hook
- Standard safety chain
- Special, riveted suspension spring
- Wear-resistant air hose for load suspension
- Operating pressure: up to 10 bar
- Air flow rate at 6 bar: approx. 900 l/min

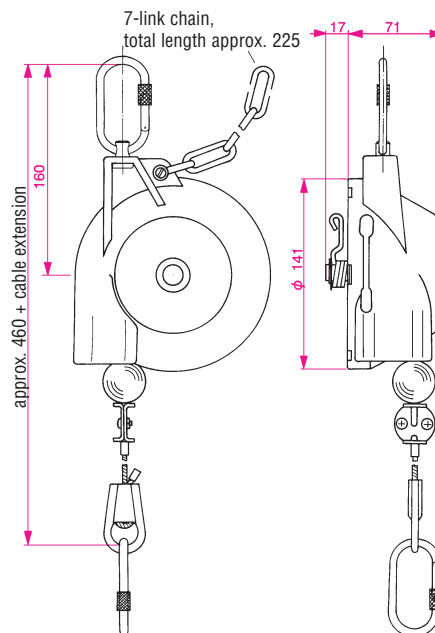


ID no.	Load range	Hose extension	Dead weight
7223 0000 01	0,4 - 1,2 kg	0,8 m	1,2 kg
7223 0000 02	1,2 - 2,2 kg	0,8 m	1,3 kg
7223 0000 03	2,2 - 3,0 kg	0,8 m	1,4 kg



Zero Gravity Balancer type 7228

- Impact- and abrasion-resistant plastic, orange
- Varnished steel housing top
- Cable drum made of hard-wearing plastic
- Suspension with rotary screw-type spring hook
- Standard safety chain and spring fracture safeguard (as from model 7228-03)
- Special, riveted suspension spring with stepless load adjustment
- Steel cable with screw-type spring hook for load suspension
- Cable wedge for continuous cable length adjustment
- Cable drum lockable
- Quick and easy cable replacement
- Certified with German “GS” mark (“safety-tested”)

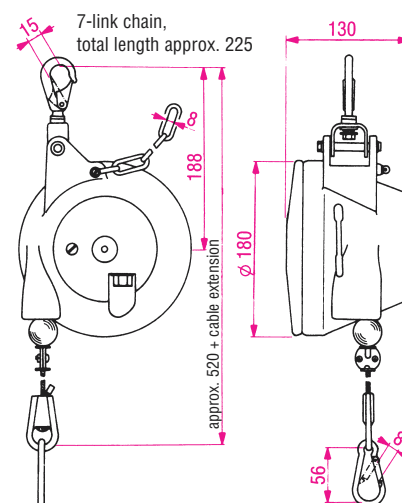


ID no.	Load range	Cable travel	Dead weight
7228 0000 01	0,4 - 1,2 kg	1,5 m	1,3 kg
7228 0000 02	1,2 - 2,6 kg	1,5 m	1,4 kg
7228 0000 03	2,6 - 3,8 kg	1,5 m	1,5 kg
7228 0000 04	3,8 - 5,2 kg	1,5 m	1,5 kg
7228 0000 05	5,2 - 6,5 kg	1,5 m	1,5 kg

Zero Gravity Balancers type 7230 (without ratchet lock) and 7231 (with ratchet lock)



- High-strength, highly abrasion-resistant plastic
- Cable drum made of hard-wearing plastic
- Suspension with rotary/swiveling safety hook
- Standard safety chain and spring fracture safeguard
- Special suspension spring, riveted
- Stepless load adjustment via endless screw
- Steel cable with elastic cable stop buffer
- Screw-type spring hook for load suspension
- Cable wedge for continuous cable length adjustment
- Integrated cable drum lock
- Quick and easy cable replacement
- Certified with German “GS” mark (“safety-tested”)

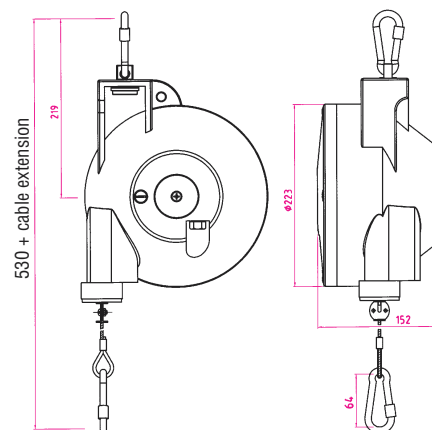


without ratchet lock	with ratchet lock	Load range	Cable travel	Dead weight	with ratchet lock
7230 0000 01	7231 0000 01	3,0 - 5,0 kg	2,0 m	2,9 kg	3,1 kg
7230 0000 02	7231 0000 02	4,5 - 7,0 kg	2,0 m	3,1 kg	3,3 kg
7230 0000 03	7231 0000 03	6,0 - 10,0 kg	2,0 m	3,2 kg	3,4 kg
7230 0000 04	7231 0000 04	9,0 - 14,0 kg	2,0 m	3,4 kg	3,6 kg
7230 0000 05	7231 0000 05	13,0 - 17,0 kg	2,0 m	3,6 kg	3,8 kg
7230 0000 06	7231 0000 06	16,0 - 21,0 kg	2,0 m	3,8 kg	4,0 kg



Zero Gravity Balancers type 7235 (without ratchet lock) and 7236 (with ratchet lock)

- High-strength aluminum sand casting
- Suspension with rotary/swiveling screw-type spring hook
- Standard safety chain and spring fracture safeguard
- Cable drum and special suspension spring form a closed unit
- Stepless load adjustment via endless screw
- Steel cable with elastic cable stop buffer
- Screw-type spring hook for load suspension
- Integrated cable drum lock
- Quick and easy cable replacement
- Certified with German “GS” mark (“safety-tested”)

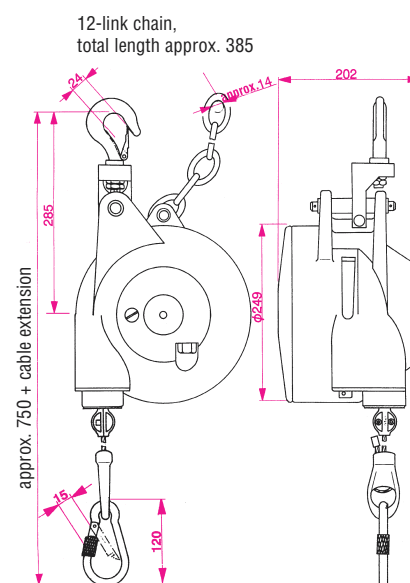


without ratchet lock	with ratchet lock	Load range	Cable travel	Dead weight	with ratchet lock
7235 0000 11	7236 0000 11	15,0 - 25,0 kg	2,0 m	7,80 kg	8,90 kg
7235 0000 12	7236 0000 12	25,0 - 35,0 kg	2,0 m	8,90 kg	10,00 kg
7235 0000 13	7236 0000 13	35,0 - 45,0 kg	2,0 m	9,50 kg	10,60 kg
7235 0000 14	7236 0000 14	45,0 - 55,0 kg	2,0 m	9,75 kg	10,85 kg



Zero Gravity Balancer type 7241

- High-strength aluminum sand casting
- Suspension with adjustable, rotary/swiveling “high safety” hook
- Standard safety expansion chain
- Standard special suspension spring, fully closed, with spring fracture safeguard
- Stepless load adjustment via endless screw
- Steel cable with elastic cable stop buffer
- Cable extension limiter for cable mount protection
- Screw-type spring hook for load suspension
- Integrated cable drum lock
- Quick and easy cable replacement
- Certified with German “GS” mark (“safety-tested”)



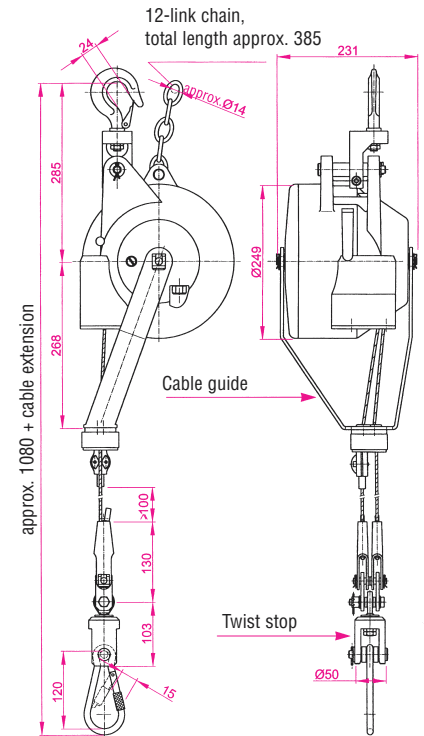
ID no.	Load range	Cable travel	Dead weight
7241 0000 01	12,0 - 20,0 kg	2,0 m	14,8 kg
7241 0000 02	20,0 - 30,0 kg	2,0 m	15,2 kg
7241 0000 03	30,0 - 45,0 kg	2,0 m	16,9 kg
7241 0000 04	45,0 - 60,0 kg	2,0 m	17,3 kg
7241 0000 05	60,0 - 75,0 kg	2,0 m	18,7 kg
7241 0000 06	75,0 - 90,0 kg	2,0 m	19,7 kg
7241 0000 07	90,0 - 100,0 kg	2,0 m	19,9 kg



Zero Gravity Balancer type 7248

- High-safety balancer thanks to double suspension cable
- High-strength aluminum sand casting
- Suspension with adjustable, rotary/swiveling “high safety” hook
- Standard safety expansion chain
- Standard special suspension spring, fully closed, with spring fracture safeguard
- Stepless load adjustment via endless screw
- Steel cables with elastic cable stop buffer
- Twist stop for cable relief (anti-rotation feature)
- Automatic length compensation between both cables following length adjustment
- Screw-type spring hook for load suspension
- Integrated cable drum lock
- Certified with German “GS” mark (“safety-tested”)

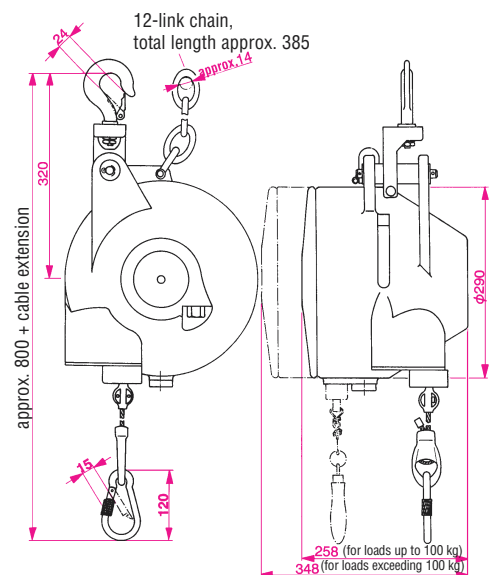
ID no.	Load range	Cable travel	Dead weight
7248 0000 01	12,0 - 20,0 kg	2,0 m	14,8 kg
7248 0000 02	20,0 - 30,0 kg	2,0 m	15,2 kg
7248 0000 03	30,0 - 45,0 kg	2,0 m	16,9 kg
7248 0000 04	45,0 - 60,0 kg	2,0 m	17,3 kg
7248 0000 05	60,0 - 75,0 kg	2,0 m	18,7 kg
7248 0000 06	75,0 - 90,0 kg	2,0 m	19,7 kg
7248 0000 07	90,0 - 100,0 kg	2,0 m	19,9 kg



Zero Gravity Balancer type 7251

- High-strength aluminum sand casting
- Suspension with adjustable, rotary/swiveling “high safety” hook
- Standard safety expansion chain
- Standard special suspension spring, fully closed, with spring fracture safeguard
- Stepless load adjustment via endless screw
- Steel cable with elastic cable stop buffer
- Cable extension limiter for cable mount protection
- Screw-type spring hook for load suspension
- Integrated cable drum lock
- Quick and easy cable replacement
- Certified with German “GS” mark (“safety-tested”)

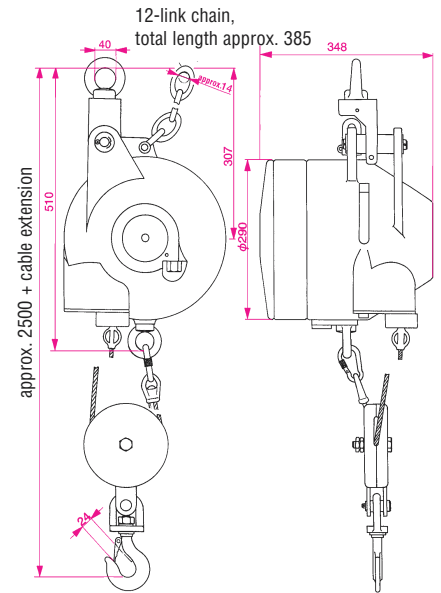
without ratchet lock	with ratchet lock	Load range	Cable travel	Dead weight	with ratchet lock
7251 0000 01	7251 0000 23	15,0 - 25,0 kg	3,0 m	25,0 kg	25,9 kg
7251 0000 02	7251 0000 24	25,0 - 35,0 kg	3,0 m	26,0 kg	26,9 kg
7251 0000 03	7251 0000 25	35,0 - 50,0 kg	3,0 m	27,0 kg	27,9 kg
7251 0000 04	7251 0000 26	50,0 - 65,0 kg	3,0 m	28,0 kg	28,9 kg
7251 0000 05		65,0 - 80,0 kg	3,0 m	29,0 kg	
7251 0000 06		80,0 - 90,0 kg	3,0 m	30,0 kg	
7251 0000 07		90,0 - 100,0 kg	3,0 m	32,0 kg	
7251 0000 08		100,0 - 115,0 kg	3,0 m	42,0 kg	
7251 0000 09		115,0 - 130,0 kg	3,0 m	44,0 kg	
7251 0000 10		130,0 - 140,0 kg	3,0 m	46,0 kg	
7251 0000 11		140,0 - 150,0 kg	3,0 m	48,0 kg	





Zero Gravity Balancer type 7261

- High-strength aluminum sand casting
- Suspension with adjustable swivel eyebolt
- Standard safety expansion chain
- Standard special suspension spring, fully closed, with spring fracture safeguard
- Stepless load adjustment via endless screw
- Steel cable with elastic cable stop buffer
- Cable extension limiter for cable mount protection
- Ball-and-socket high-safety hook with integrated twist stop for load suspension
- Integrated cable drum lock
- Quick and easy cable replacement
- Certified with German "GS" mark ("safety-tested")



ID no.	Load range	Cable travel	Dead weight
7261 0000 01	150,0 - 175,0 kg	1,5 m	46,0 kg
7261 0000 02	175,0 - 200,0 kg	1,5 m	47,5 kg
7261 0000 03	200,0 - 225,0 kg	1,5 m	49,0 kg
7261 0000 04	225,0 - 250,0 kg	1,5 m	51,0 kg
7261 0000 05	250,0 - 275,0 kg	1,5 m	53,0 kg
7261 0000 06	275,0 - 300,0 kg	1,5 m	55,0 kg

Application Examples from Practice



Precision positioning



Keeping heavy tools within easy reach



Improved ergonomics



Process optimization



Enhancing process safety



Maximum safety



Keeping very heavy tools safely in position



Customized solutions



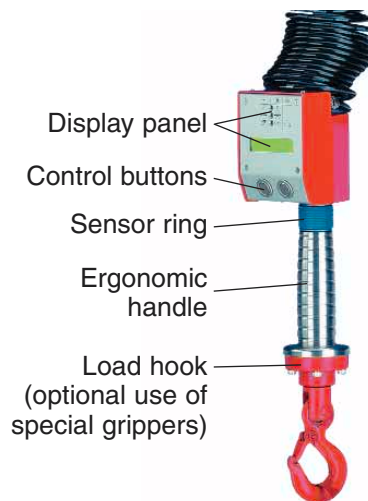
Kromatic type 9100 (with standard up/down control through ergonomic potentiometer rotary handle)

Kromatic type 9200 (with intelligent up/down and balancing control, sensor ring, display and menu for customized configuration)

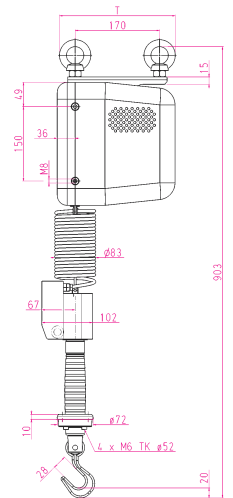
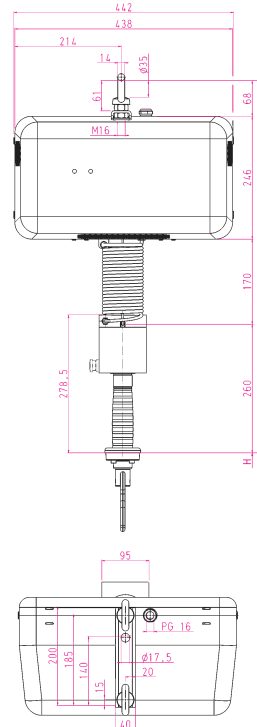
- 2 devices in one: hand-operated hoist with sensor ring for height adjustment PLUS automatic balancer with automatic load recognition
- Easy load movement (slightly pushing/pulling the load triggers balancer action)
- User-friendly menu control in 4 languages
- No additional programming unit required
- Ergonomic handle with illuminated display
- Safety load hook
- Optional load hook with quick-action coupling
- Easy attachment of special grippers
- Handle allows many direct additional settings
- Power requirements (depending on model): 230 V or 110 V only



Control unit 9100



Control unit 9200



ID no.	Operation	Load range	Cable travel (lift)	Speed	Power
9100 0000 00	Up/down potentiometer control	30 kg	2,5 m	30 m/min	230 V, 50 Hz
9100 0000 01	Up/down potentiometer control	60 kg	2,5 m	30 m/min	230 V, 50 Hz
9100 0001 00	Up/down potentiometer control	30 kg	2,5 m	30 m/min	110 V, 60 Hz
9100 0001 01	Up/down potentiometer control	60 kg	2,5 m	30 m/min	110 V, 60 Hz
9200 0000 00	Intelligent balancer control	30 kg	2,5 m	30 m/min	230 V, 50 Hz
9200 0000 01	Intelligent balancer control	60 kg	2,5 m	30 m/min	230 V, 50 Hz
9200 0001 00	Intelligent balancer control	30 kg	2,5 m	30 m/min	110 V, 60 Hz
9200 0001 01	Intelligent balancer control	60 kg	2,5 m	30 m/min	110 V, 60 Hz

Spring Balancer (“retractor”)

CARL STAHL KROMER spring balancers are designed so the retractive force increases in direct proportion to cable extension. Thus, the working load is automatically retracted to its original position after use, which clears the workplace for other tools or devices. The slow rate of spring/retracting force increase guarantees working accuracy.



Zero Gravity Balancer

CARL STAHL KROMER zero gravity balancers are characterized by a cone-shaped cable drum. This feature ensures the retractive force to remain almost constant across the entire cable extension length. As a result, the hooked load remains suspended in any working position. Since there is no retracting force increase, CARL STAHL KROMER zero gravity balancers minimize worker fatigue and enable high working accuracy even over long periods.



Ratchet lock

The ratchet lock – an automatic arresting mechanism – stops load retraction at pre-defined positions. This function is automatically activated when the load is moved backward slowly. Conversely, the lock remains inactive when the load is moved backward with speed. This can prove highly ergonomic in some applications, e.g. when the user wants the suspended load to be within easy reach (i.e. not fully retracted) between different working steps. The ratchet lock feature is available for various spring and zero gravity balancers. Please refer to the appropriate product brochures and descriptions.





Carl Stahl Kromer GmbH
 Walter Knoell Straße 3
 D-79115 Freiburg



Phone: +49 (7 61) 120 22-0
 Fax: +49 (7 61) 120 22-22
 Email: freiburg@carlstahl.com